



Romotop®

FIREPLACE INSERTS



CONTENT	page
Content	3
Romotop	4
Respecting nature	5
Fireplace inserts IMPRESSION 3G	6
IMPRESSION 3G 59.44.14(16), IMPRESSION 3G 70.50.14(16), IMPRESSION 3G 80.54.14(16)	8
IMPRESSION 3G L 83.51.14(16), IMPRESSION 3G L 97.51.14(16),	9
IMPRESSION L(R) 3G L 63.51.38.14(16), IMPRESSION L(R) 3G L 75.51.41.14(16)	10
IMPRESSION C 3G L 74.51.37.24(26), IMPRESSION U 3G L 55.51.55.24(26) K1	11
Fireplace inserts DYNAMIC 2G	12
DYNAMIC 2G 44.55.01N, DYNAMIC 2G 66.50.01N, DYNAMIC 2G 66.50.13N	14
DYNAMIC B2G 66.50.01N, DYNAMIC B2G 66.50.13N	15
DYNAMIC W 2G 66.50.01, DYNAMIC W 2G 66.50.01P	16
DYNAMIC WB 2G 66.50.01, DYNAMIC WB 2G 66.50.01P	17
Fireplace inserts DYNAMIC PLUS 3G	18
DYNAMIC 3G 38.50.01, DYNAMIC 3G 44.55.01, DYNAMIC 3G 66.44.01	20
DYNAMIC B3G 38.50.01, DYNAMIC B3G 66.44.01	21
DYNAMIC T 3G 44.55.01, DYNAMIC T 3G 66.44.01	22
DYNAMIC R/L 3G S 55.44.42.21, DYNAMIC R/L 3G S 72.44.42.21 DYNAMIC U 3G S 56.44.57.21 K1	23

CONTENT	page
Fireplace inserts HEAT 3G	24
HEAT 3G L 66.50.04(06), HEAT 3G L 88.66.04 (06) HEAT 3G L 88.50.04 (06)	26
HEAT 3G L 110.50.04(06), HEAT R/L 3G L 65.51.40.24(26), HEAT R/L 3G L 81.51.40.24(26)	27
HEAT C 3G L 50.52.31.24(26), HEAT C 3G L 65.52.31.24(26), HEAT C 3G L 80.52.31.24(26)	28
HEAT U 3G L 50.52.50.24(26), HEAT U 3G L 50.52.70.24(26)	29
HEAT T 3G 70.50.04(06), HEAT T 3G L 88.50.04(06)	30
Fireplace inserts HEAT 4G	32
HEAT 4G 59.50.04(06), HEAT 4G 70.50.04(06), HEAT 4G 80.50.04(06)	34
HEAT 4G 59.44.14(16), HEAT 4G 70.44.14(16)	35
HEAT R/L 4G S 60.44.33.24(26), HEAT R/L 4G S 70.44.33.24(26), HEAT R/L 4G S 65.51.40.26(24)	36
HEAT W 4G 59.50.04(06), HEAT W 2G 70.50.04(06)	37
HEAT Cassette	38
HEAT 4G 59.50.04(06), HEAT 4G 70.50.04(06), HEAT 4G 80.50.04(06)	39
Technology	40
Technical parameters for fireplace inserts	45

Legend

P_R	Regulated output
P_h	Regulated hot-water exchanger output
%	Efficiency
∅	Flue socket diameter

STABILITY

MEANS STRENGTH
AND CONFIDENCE

TRADITION

IS SOLID FOUNDATION



FAMILY

IS THE HEART

INNOVATION

IS THE FUTURE



For the Romotop brand, respect for nature is not only a topic, but also a commitment. Romotop fireplace stoves and fireplaces meet strict ecological limits required by European directives and standards such as Ecodesign, German BImSch V2, Austrian 15a B-VG and others. The products therefore contribute to environmental protection as well as the sustainable use of natural energy sources. Heating with wood is a proven environmentally friendly solution in modern stoves and fireplace inserts.





FIREPLACE INSERTS IMPRESSION 3G

IMPRESSION fireplace inserts are designed for interiors thought through down to the last detail. The range combines distinctive design with modern technical solutions and offers various types with different sizes and constructions. Available options include lift-up doors with split glazing, side-opening doors and corner glazing, also in double-glazed versions. The combustion chamber is available in two versions – black and grey. In addition to their attractive appearance, IMPRESSION fireplace inserts also offer innovative features for pleasant and efficient operation.

- double glazing in fireplace inserts with straight and corner doors to reduce heat flow into the room
- designed for accumulation operation
- combustion chamber made of high-quality Igniton in grey or black
- primary and secondary air controlled by a single control element
- EAI – External Air Intake
- ready for Romotop Mammoth accumulation elements

TECHNOLOGY



IMPRESSION 3G with Mammoth rings

Mammoth accumulation for optimal energy storage.

The **M** designation in the order code means a complete set including **Mammoth** rings.



IMPRESSION 3G with AMS

IMPRESSION fireplace inserts are certified with the AMS SET 02 draught system.

The **A** designation in the order code means a complete set – the fireplace insert including the **AMS SET 02** draught system.

Features of IMPRESSION 3G:

- double glazing in fireplace inserts with straight and corner doors
- printed glass
- robust body construction
- optional flue outlet depending on the model recommended for radiant constructions



Igniton grey

Igniton black

Igniton firebox

14 16

order code:
Igniton grey – 14
Igniton black – 16

IMPRESSION 3G

Straight, side-opening, double-glazed



IMPRESSION 3G 59.44.14(16)

order code:
I3N 14(16)
I3N 14(16)M

P_R	3,3–8,6 kW
% I3N 14(16)	83 %
% I3N 14(16)M	83 %
∅	150–200 mm
	A⁺



IMPRESSION 3G 70.50.14(16)

order code:
I3Z 14(16)
I3Z 14(16)M

P_R	4,3–11,3 kW
% I3Z 14(16)	82 %
% I3Z 14(16)M	85 %
∅	150–200 mm
	A⁺



IMPRESSION 3G 80.54.14(16)

order code:
I3X 14(16)
I3X 14(16)M

P_R	5,2–13,5 kW
% I3X 14(16)	81 %
% I3X 14(16)M	84 %
∅	180–200 mm
	A⁺

IMPRESSION 3G

Straight, with lift-up door and double glazing



IMPRESSION 3G L 83.51.14(16)

order code:
I3LJ 14(16)
I3LJ 14(16)M
I3LJ 14(16)A

P_R	4,9–12,7 kW
% I3LJ 14(16)	77 % A
% I3LJ 14(16)M	81 % A⁺
% I3LJ 14(16)A	86 % A⁺
∅	180/200 mm



IMPRESSION 3G L 97.51.14(16)

order code:
I3LK 14(16)
I3LK 14(16)M
I3LK 14(16)A

P_R	5,6–14,6 kW
% I3LK 14(16)	80 % A
% I3LK 14(16)M	83 % A⁺
% I3LK 14(16)A	88 % A⁺
∅	180/200 mm

order code:
Igniton grey – 14
Igniton black – 16

Igniton firebox

14 16

order code:
Igniton grey – 14
Igniton black – 16

Igniton firebox

14 16

IMPRESSION 3G

Corner, with lift-up door and split glazing



IMPRESSION L(R) 3G L 63.51.38.14(16)

order code:
IL(R)3LG 14(16)
IL(R)3LG 14(16)M
IL(R)3LG 14(16)A

P_R	5,0–13,0 kW
% IL(R)3LG 14(16)	77 % A
% IL(R)3LG 14(16)M	81 % A*
% IL(R)3LG 14(16)A	90 % A*
∅	180/200 mm



IMPRESSION L(R) 3G L 75.51.41.14(16)

order code:
IL(R)3LH 14(16)
IL(R)3LH 14(16)M
IL(R)3LH 14(16)A

P_R	6,1–15,9 kW
% IL(R)3LH 14(16)	84 % A*
% IL(R)3LH 14(16)M	83 % A*
% IL(R)3LH 14(16)A	87 % A*
∅	180/200 mm

order code:
Igniton grey – 14
Igniton black – 16

Igniton firebox

14 16

IMPRESSION 3G

Three-sided, with lift-up door and split glazing



IMPRESSION C 3G L 74.51.37.24(26)

order code:
IC3LH 24(26)
IC3LH 24(26)M
IC3LH 24(26)A

P_R	5,7–14,8 kW
% IC3LH 24(26)	76 % A
% IC3LH 24(26)M	80 % A
% IC3LH 24(26)A	87 % A*
∅	180/200 mm



IMPRESSION U 3G L 55.51.55.24(26) K1

order code:
IU3LG 24(26) K1
IU3LG 24(26) K1M
IU3LG 24(26) K1A

P_R	5,8–15,1 kW
% IU3LG 24(26) K1	78 % A
% IU3LG 24(26) K1M	81 % A*
% IU3LG 24(26) K1A	85 % A*
∅	180/200 mm

order code:
Igniton grey – 24
Igniton black – 26

Igniton firebox

24 26



FIREPLACE INSERTS DYNAMIC 2G

DYNAMIC fireplace inserts combine a modern look, well-thought-out technology and robust construction. The range is also suitable for low-energy houses and stands out for its variety of versions, body strength and emphasis on technical solutions. The result is a reliable heating appliance for everyday operation.

- double or triple glazing in the door (depending on the fireplace insert type) to reduce heat flow into the room
- design printed glass
- combustion chamber lined with high-quality chamotte
- versions also available with rear fuel loading
- designed for accumulation operation
- an ideal fireplace insert for low-energy houses
- primary and secondary air controlled by a single control element
- EAI – External Air Intake into the combustion chamber
- ready for Romotop Mammoth accumulation elements

TECHNOLOGY

DYNAMIC 2G with Mammoth rings

Mammoth accumulation for optimal energy storage.



Features of DYNAMIC 2G:

- left-hand door opening with the option to change to right-hand opening
- printed glass
- double glazing as standard
- heavy chamotte firebox lining
- robust body construction
- cast-iron collar or dome optional depending on model
- recommended for radiant constructions



Rigid door profile with double glazing

Door stability and strength are among the most important features of the entire fireplace insert. That is why special closed rolled door profiles are used, designed to withstand high operating loads and more demanding handling.

DYNAMIC 2G

Straight, side-opening, with double or triple glazing



DYNAMIC 2G
44.55.01N

order code: D2L 01N

P_R	3,5–9,1 kW
%	85 %
∅	180/200mm

A*



DYNAMIC 2G
66.50.01N

order code: D2M 01N

P_R	3,9–10,1 kW
%	85 %
∅	180/200mm

A*



DYNAMIC 2G
66.50.13N

order code: D2M 13N

P_R	2,4–6,2 kW
%	85 %
∅	200mm

A*

DYNAMIC 2G

Straight, side-opening, with double or triple glazing and rear loading



DYNAMIC B2G
66.50.01N

order code: DB2M 01N

P_R	3,9–10,1 kW
%	85 %
∅	180/200mm

A*



DYNAMIC B2G
66.50.13N

order code: DB2M 13N

P_R	2,4–6,2 kW
%	85 %
∅	200mm

A*

DYNAMIC 2G with hot-water exchanger

Straight, side-opening – double or triple glazing



**DYNAMIC W 2G
66.50.01**

order code: DW2M 01

P_R	5,9–15,2 kW
P_h	4,1–10,7 kW
%	89 %
∅	180 mm

A*



**DYNAMIC W 2G
66.50.01P**

order code: DW2M 01P

P_R	5,8–15,1 kW
P_h	4,3–11,3 kW
%	88 %
∅	180 mm

A*

DYNAMIC 2G with hot-water exchanger

Straight, side-opening – double or triple glazing and rear loading



**DYNAMIC WB 2G
66.50.01**

order code: DWB2M 01

P_R	5,9–15,3 kW
P_h	3,8–9,9 kW
%	87 %
∅	180 mm

A*



**DYNAMIC WB 2G
66.50.01P**

order code: DWB2M 01P

P_R	6,0–15,6 kW
P_h	4,1–10,5 kW
%	86 %
∅	180 mm

A*



FIREPLACE INSERTS DYNAMIC PLUS 3G

At first glance, DYNAMIC PLUS 3G fireplace inserts follow the DYNAMIC 2G range, but structurally they are designed for higher demands on accumulation operation. They are intended for connection with accumulation systems such as Romotop AMS. The basis is heavy-duty fine-grain steel with increased strength. Thanks to the specially designed combustion chamber construction, high temperatures are achieved, which is why the firebox is lined with thick chamotte. These fireplace inserts are the ideal choice for long-term accumulation operation.

- fireplace inserts designed for continuous accumulation operation
- double glazing in the door to reduce heat flow into the room
- design printed glass
- combustion chamber lined with high-quality chamotte
- an ideal fireplace insert for low-energy houses
- primary and secondary air controlled by a single control element
- EAI – External Air Intake
- direct connection of accumulation sets – Romotop AMS system
- ready for Romotop Mammoth accumulation elements

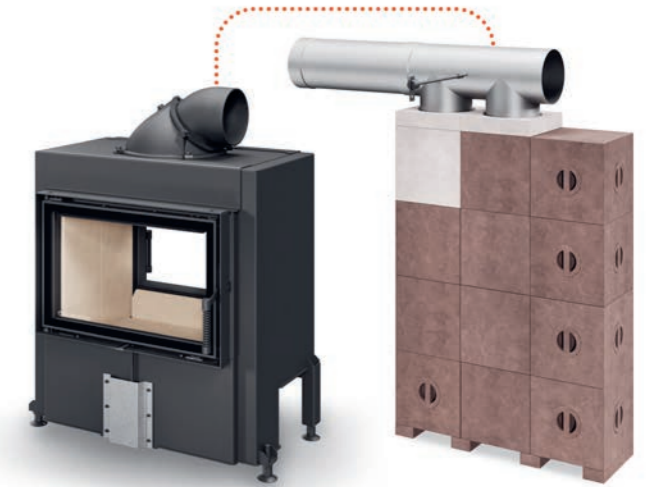
TECHNOLOGY



DYNAMIC PLUS 3G with Mammoth rings

Mammoth accumulation for optimal energy storage.

The **M** designation in the order code means a complete set including **Mammoth** rings.



DYNAMIC PLUS 3G with AMS

DYNAMIC PLUS 3G fireplace inserts are certified with the AMS SET 01 draught system.

The **A** designation in the order code means a complete set – the fireplace insert including the **AMS SET 01** draught system and components.



Rigid door profile with double glazing

Door stability and strength are among the most important features of the entire fireplace insert. That is why special closed rolled door profiles are used, designed to withstand high operating loads and more demanding handling.

Features of DYNAMIC PLUS 3G:

- left-hand door opening with the option to change to right-hand opening
- printed glass
- double glazing as standard
- heavy chamotte firebox lining
- robust body construction
- cast-iron collar or dome optional depending on model
- the fireplace inserts are available in the Austrian KOV calculation program

DYNAMIC PLUS 3G

Straight, side-opening, with double glazing



DYNAMIC 3G
38.50.01

order code:
D3F 01
D3F 01M
D3F 01A

P_R	5,1–13,1 kW
% D3F 01	– %
% D3F 01M	87 %
% D3F 01A	91 %
∅	180/200mm
	A⁺



DYNAMIC 3G
44.55.01

order code:
D3G 01
D3G 01M
D3G 01A

P_R	5,8–15,1 kW
% D3G 01	– %
% D3G 01M	89 %
% D3G 01A	93 %
∅	180/200mm
	A⁺



DYNAMIC 3G
66.44.01

order code:
D3H 01
D3H 01M
D3H 01A

P_R	6,2–16,0 kW
% D3H 01	– %
% D3H 01M	89 %
% D3H 01A	92 %
∅	180/200mm
	A⁺

DYNAMIC PLUS 3G

Straight, side-opening, with double glazing and rear loading



DYNAMIC B3G
38.50.01

order code:
DB3F 01
DB3F 01M
DB3F 01A

P_R	5,0–13,0 kW
% DB3F 01	– %
% DB3F 01M	85 %
% DB3F 01A	88 %
∅	180/200mm
	A⁺



DYNAMIC B3G
66.44.01

order code:
DB3H 01
DB3H 01M
DB3H 01A

P_R	5,5–14,2 kW
% DB3H 01	– %
% DB3H 01M	84 %
% DB3H 01A	89 %
∅	180/200mm
	A⁺

DYNAMIC PLUS 3G

Tunnel, side-opening, with double glazing



DYNAMIC T 3G 44.55.01

order code:
DT3G 01
DT3G 01M
DT3G 01A

P_R	5,5–14,2 kW
% DT3G 01	– %
% DT3G 01M	84 %
% DT3G 01A	94 %
∅	180/200 mm

A+

DYNAMIC T 3G 66.44.01

order code:
DT3H 01
DT3H 01M
DT3H 01A

P_R	7,3–19,0 kW
% DT3H 01	– %
% DT3H 01M	81 %
% DT3H 01A	89 %
∅	180/200 mm

A+

DYNAMIC PLUS 3G

Corner, side-opening, with double glazing



DYNAMIC R/L 3G S 55.44.42.21

order code:
DR(L)3SG 21
DR(L)3SG 21M
DR(L)3SG 21A

P_R	5,0–13,0 kW
% DR(L)3SG 21	– %
% DR(L)3SG 21M	83 %
% DR(L)3SG 21A	91 %
∅	180/200 mm

A+

DYNAMIC R/L 3G S 72.44.42.21

order code:
DR(L)3SH 21
DR(L)3SH 21M
DR(L)3SH 21A

P_R	6,8–17,8 kW
% DR(L)3SH 21	– %
% DR(L)3SH 21M	82 %
% DR(L)3SH 21A	90 %
∅	180/200 mm

A+

DYNAMIC U 3G S 56.44.57.21 K1

order code:
DU3SH 21 K1
DU3SH 21 K1M
DU3SH 21 K1A

P_R	5,5–14,3 kW
% DU3H 21 K1	– %
% DU3H 21 K1M	81 %
% DU3H 21 K1A	84 %
∅	180/200 mm

A+



FIREPLACE INSERTS HEAT 3G

HEAT fireplace inserts combine technology, quality and the Romotop brand background with an attractive price level. The range includes models with a three-sided view of the fire and lift-up doors, as well as corner, straight and tunnel versions. The tunnel version also makes it possible to connect two spaces and bring the atmosphere of fire to both sides.

- for convection and accumulation operation with the use of ventilation grilles
- design printed glass
- combustion chamber lined with Igniton in grey or black
- primary and secondary air controlled by a single control element
- EAI – External Air Intake into the combustion chamber
- the lift-up door mechanism is equipped with the latest SILENT LIFT running system for quiet and easy operation
- ready for Romotop Mammoth accumulation elements



Romotop MAMMOTH accumulation elements

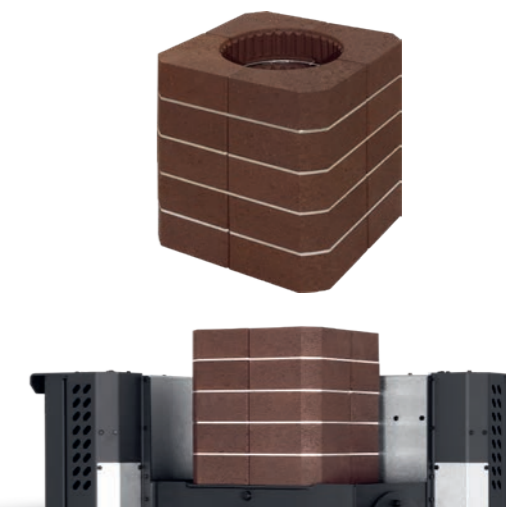
Mammoth accumulation elements are suitable for all Romotop fireplace inserts. They are made of a special material with high heat storage capacity. Mammoth accumulation elements are installed directly on the body of the fireplace insert and on the flue pipe.



Rigid door profile

Door stability and strength are among the most important features of the entire fireplace insert. That is why special closed rolled door profiles are used, designed to withstand high operating loads and more demanding handling. The groove running along the full length of the profile prevents the glass seal from falling out and guarantees perfect tightness of the combustion chamber.

TECHNOLOGY



Igniton firebox

04 / 06

order code:
Igniton grey – 04
Igniton black – 06

HEAT 3G

Straight, with lift-up doors



HEAT 3G L
66.50.04(06)
order code:
H3LE 04(06)

P_R 3,9–10,1 kW
% 85 %
∅ 200mm
A⁺



HEAT 3G L
88.66.04 (06)
order code:
H3LJ 04 (06)

P_R 5,5–14,2 kW
% 81 %
∅ 200mm
A⁺



HEAT 3G L
88.50.04 (06)
order code:
H3LF 04 (06)

P_R 4,5–11,7 kW
% 81 %
∅ 200mm
A⁺

HEAT 3G

Straight and corner, with lift-up doors



HEAT 3G L
110.50.04(06)
order code:
H3LG 04(06)

P_R 6,0–15,6 kW
% 83 %
∅ 200mm
A⁺



HEAT R/L 3G L
65.51.40.24(26)
order code:
HR(L)3LG 24(26)

P_R 3,5–9,0 kW
% 85 %
∅ 200mm
A⁺



HEAT R/L 3G L
81.51.40.24(26)
order code:
HR(L)3LF 24(26)

P_R 6,0–15,6 kW
% 83 %
∅ 200mm
A⁺

order code:
Igniton grey – 04
Igniton black – 06

Igniton firebox

04 06

order code:
Igniton grey – 04, 06
Igniton black – 24, 26

Igniton firebox

04 06 24 26

HEAT 3G

Three-sided, with lift-up door and split glazing



HEAT C 3G L
50.52.31.24(26)

order code:
HC3LE 24(26)

P_R 2.9–7.4 kW
% 82 %
∅ 150mm

A+



HEAT C 3G L
65.52.31.24(26)

order code:
HC3LH 24(26)

P_R 3.9–10.1 kW
% 83 %
∅ 200mm

A+



HEAT C 3G L
80.52.31.24(26)

order code:
HC3LJ 24(26)

P_R 5.0–12.9 kW
% 80 %
∅ 200mm

A

HEAT 3G

Three-sided, with lift-up door and split glazing



HEAT U 3G L
50.52.50.24(26)

order code:
HU3LG 24(26)

P_R 4.0–10.4 kW
% 83 %
∅ 200mm

A+



HEAT U 3G L
50.52.70.24(26)

order code:
HU3LF 24(26)

P_R 5.0–13.0 kW
% 83 %
∅ 200mm

A+

order code:
Igniton grey – 24
Igniton black – 26

Igniton firebox

24 26

order code:
Igniton grey – 24
Igniton black – 26

Igniton firebox

24 26

HEAT 3G

Tunnel, side-opening / with lift-up door



HEAT T 3G
70.50.04(06)

order code:
HT3Z 04(06)

P_R 4,0–10,3 kW
% 82 %
Ø 180 mm

A+



HEAT T 3G L
88.50.04(06)

order code:
HT3LF 04(06)

P_R 5,8–15,1 kW
% 81 %
Ø 200 mm

A

order code:
Igniton grey – 04
Igniton black – 06

Igniton firebox

04 06





FIREPLACE INSERTS HEAT 4G

HEAT fireplace inserts offer proven technology and brand quality at an attractive price. Two colour options of the firebox, various accumulation elements and a wide range of accessories are available.

- for convection and accumulation operation with the use of ventilation grilles
- design printed glass
- combustion chamber lined with high-quality Igniton material in black and grey
- primary and secondary air controlled by a single control element
- EAI – External Air Intake into the combustion chamber
- ready for Romotop Mammoth accumulation elements



Romotop MAMMOTH accumulation elements

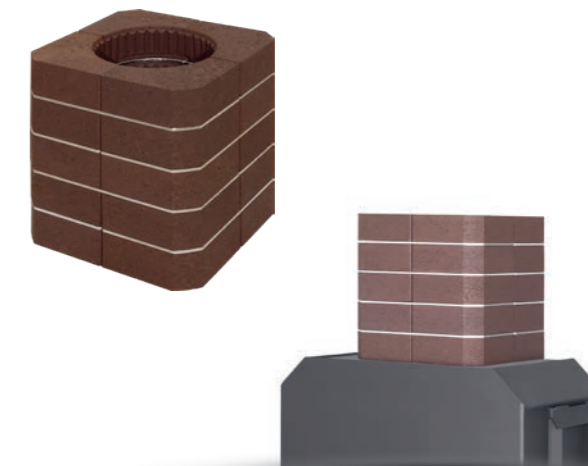
Mammoth accumulation elements are suitable for all Romotop fireplace inserts. They are made of a special material with high heat storage capacity. Mammoth accumulation elements are installed directly on the body of the fireplace insert and on the flue pipe.



Rigid door profile

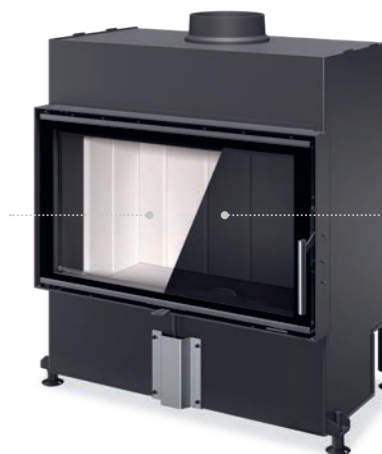
Door stability and strength are among the most important features of the entire fireplace insert. That is why special closed rolled door profiles are used, designed to withstand high operating loads and more demanding handling.

TECHNOLOGY



Igniton
grey

Igniton
black



Igniton firebox

04 / 06

order code:
Igniton grey – 04
Igniton black – 06

HEAT 4G

Straight, side-opening



HEAT 4G
59.50.04(06)

order code:
H4N 04(06)

P_R 4,2-10,8 kW
% 82 %
Ø 150 mm

A⁺



HEAT 4G
70.50.04(06)

order code:
H4Z 04(06)

P_R 5,5-14,3 kW
% 80 %
Ø 150 mm

A



HEAT 4G
80.50.04(06)

order code:
H4X 04(06)

P_R 5,6-14,4 kW
% 81 %
Ø 200 mm

A⁺

HEAT 4G

Straight, side-opening



HEAT 4G
59.44.14(16)

order code:
H4T 14(16)

P_R 2,4-6,2 kW
% 84 %
Ø 150 mm

A⁺



HEAT 4G
70.44.14(16)

order code:
H4P 14(16)

P_R 2,8-7,3 kW
% 85 %
Ø 150 mm

A⁺

order code:
Igniton grey - 04
Igniton black - 06

Igniton firebox

04 06

order code:
Igniton grey - 14
Igniton black - 16

Igniton firebox

14 16

HEAT 4G

Corner, side-opening



HEAT R/L 4G S
60.44.33.24(26)

order code:
HR(L)4SY 24(26)

P_r 3,4–8,8 kW
% 81 %
∅ 150 mm

A+



HEAT R/L 4G S
70.44.33.24(26)

order code:
HR(L)4SX 24(26)

P_r 4,5–11,7 kW
% 80 %
∅ 150 mm

A



HEAT R/L 4G S
65.51.40.24(26)

order code:
HR(L)4SG 24(26)

P_r 5,2–13,5 kW
% 80 %
∅ 200 mm

A

HEAT W 4G with hot-water exchanger

Straight, side-opening



HEAT W 4G
59.50.04(06)

order code:
HW4N 04(06)

P_r 6,5–16,9 kW
P_e 5,8–12,9 kW
% 88 %
∅ 180 mm

A+



HEAT W 2G
70.50.04(06)

order code:
HW4Z 04(06)

P_r 7,8–20,3 kW
P_e 5,7–14,8 kW
% 86 %
∅ 180 mm

A+

order code:
Igniton grey – 24
Igniton black – 26

Igniton firebox

24 26

order code:
Igniton grey – 04
Igniton black – 06

Igniton firebox

04 06



HEAT CASSETTE

A New Life for Your Fireplace

HEAT cassette fireplace inserts are specifically designed to transform open fireplaces into modern, efficient heating solutions with closed combustion systems. They offer an elegant approach to enhancing heating efficiency while preserving the charm of a live fire in your home.

Technical Features:

- Engineered with premium materials, fully compliant with strict ecological standards, durable vermiculite lining for efficient combustion and long-lasting performance.
- One simple control manages both primary and secondary airflow.
- Convection casing with one lower air inlet and two upper outlets for efficient heat distribution.

- Large glass front for a clear view of the flames.
- Secondary air system keeps the glass clean and soot-free.
- Ergonomic handle design – discreet, easy to grip, and secure to close.
- External Air Intake (EAI) ensures clean burning without using indoor air.

HEAT CASSETTE

Straight



CASSETTE 1G 80.52.01

order code:
K1Z 01

P_N	6,5 kW
P_R	3,3-8,4 kW
%	81 %
Ø	150 mm
	A⁺



CASSETTE 1G 90.48.01

order code:
K1X 01

P_N	6,5 kW
P_R	3,3-8,4 kW
%	80 %
Ø	150 mm
	A⁺

TECHNOLOGY

Romotop MAMMOTH accumulation – the ability to store thermal energy

Mammoth accumulation elements can be used with all types of Romotop fireplace inserts. They are made of a special material with high heat storage capacity. They are hung on the body of the fireplace inserts, placed on the ceiling around the flue pipe, or are directly part of the flue gas path at the flue gas outlet – in this case as accumulation rings. This solution is among the most

efficient, because the high-temperature flue gases pass directly through the fittings and transfer the maximum amount of heat energy to them. The main task of Mammoth accumulation elements is to gradually release the accumulated heat into the surroundings, for up to several hours after the flame in the stove or fireplace insert has gone out.



Romotop MAMMOTH accumulation rings combination of cast iron and Mammoth accumulation material

The patented ROMOTOP MAMMOTH accumulation rings combine the advantages of the high thermal conductivity of cast iron and the high specific heat capacity of magnetite. Thanks to their internal cast-iron construction, they offer a long

service life while ensuring efficient heat transfer deep into the accumulation mass. The transfer of heat energy from the flue gases is highly efficient. No destruction occurs under thermal load. The connection is tight, yet still removable.

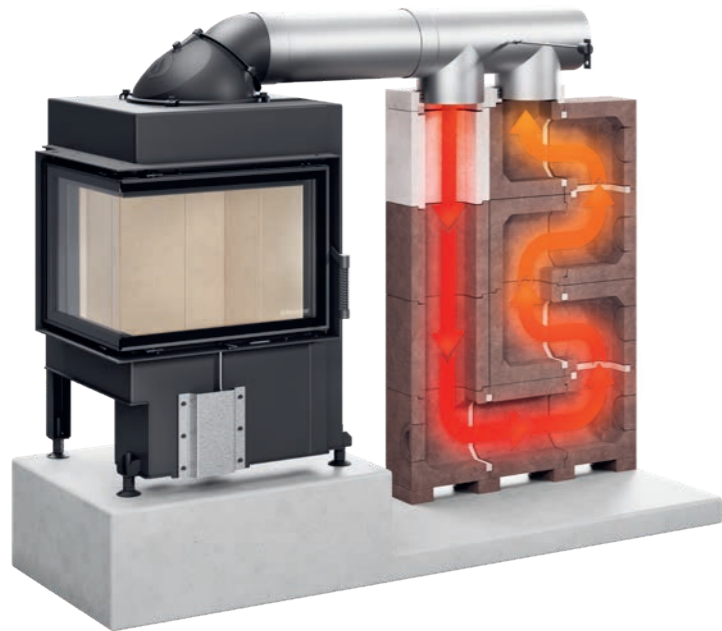


Special modules – accumulation fittings with exceptional heat storage capacity and rapid heat conduction. They quickly absorb heat energy from the flue gases passing through the inner space of the fittings.

AMS fittings are installed in the flue gas path between the firebox (fireplace insert) and the chimney. During combustion and after it ends, they transfer the accumulated energy to the surroundings and heat the outer shell (cladding) of the fireplace or stove. The interior is heated by pleasant, long-lasting radiant heat. It is a simple yet highly efficient way of using heat that would otherwise largely escape through the chimney without further use.

What are the advantages of the AMS modular accumulation system?

Above all, fast transfer of heat energy (up to 25x higher than that of chamotte used in fireplace and stove constructions) and high material density (bulk density 2,750 kg/m³). The system offers flexible options for positioning the AMS set itself on the right or left side of the fireplace insert. The system was developed and dimensioned for the **Romotop DYNAMIC PLUS 3G** fireplace insert range.

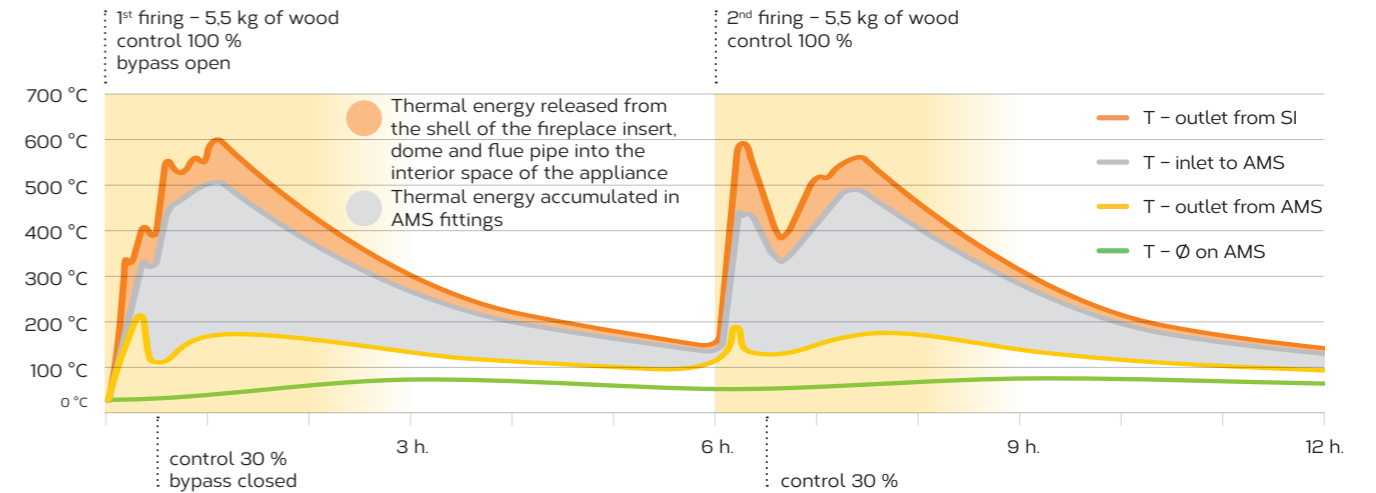


AMS
+
**Fireplace insert
DYNAMIC PLUS 3G**

fuel load	2 x 5,5 kg
heating time	12 h.
total output of AMS set	19 kW
average hourly output of AMS set	3,2 kW/h.
bulk density AMS	2 750 kg/m³
total AMS weight	330 kg
draught length of set	4 m

Heat energy accumulation DYNAMIC PLUS 3G fireplace insert + AMS set

DYNAMIC PLUS 3G fireplace insert



Technical parameters of DYNAMIC PLUS 3G fireplace inserts with AMS connection or Mammoth accumulation rings *

Model	order code	nominated output kW	wood load kg/h.	combustible wood charge kg	average temperature			
					outlet from SI °C	inlet to AMS °C	outlet from AMS °C	behind 8x Mammoth* °C
DYNAMIC (B) 3G 38.50.01	D3F 01 / DB3F 01	10,1	2,6	8,0	658	583	198	226
DYNAMIC 3G 44.55.01	D3G 01	12	3,0	8,6	630	560	127	205
DYNAMIC (B) 3G 66.44.01	D3H 01 / DB3H 01	12,9	3,3	9,5	632	557	146	231
DYNAMIC R/L 3G S 55.44.42.21	DR3SG 21	12,1	3,1	8,5	705	578	153	239
DYNAMIC R/L 3G S 72.44.42.21	DR3SH 21	14,5	3,9	9,5	696	570	177	279
DYNAMIC T 3G 44.55.01	DT3G 01	12	3,0	8,9	600	520	118	248
DYNAMIC T 3G 66.44.01	DT3H 01	16	4,2	9,8	668	588	186	276

* operation at nominal output / hourly refuelling

HIGH EFFICIENCY



Flue gas system DOUBLE SPIN

Thanks to the modern structure of the combustion and flue chamber with the DOUBLE SPIN system, Romotop fireplace inserts achieve excellent parameters in a wide range of outputs.

During combustion, the double spin system reaches optimum efficiency and emission values in a much wider range of outputs than standard solutions.

Such a wide range of so-called optimum outputs is a great advantage for customers, as they can now be sure their fireplace insert is always working perfectly during normal heating.



Hot water exchanger with the TRIPLE PASS system

The TRIPLE PASS system, or the triple passage, developed by the Romotop company increases the efficiency of the heat exchanger of fireplace inserts and ovens significantly.

Simply we can say that the same amount of the gases of combustion evolved by the combustion chamber of the fireplace insert goes through the flue gas section of the exchanger three times. During this way, that is three times longer, the exchanger is able to take much more heat from the gases of combustion than an exchanger with the standard solution.

- Higher overall efficiency (up to 10 %) than with the standard solution = saving in fuel.
- Higher output of the hot water exchanger than with the standard solution = more heat for the heating system.
- Lower production of pollutant emissions than with the standard solution = next step towards the cleaner environment.

TECHNICAL PARAMETERS FOR FIREPLACE INSERTS IMPRESSION 3G

Order code	Model	Specifications	Regulated output (kW)	Efficiency (%) *	Chimney draft (Pa)	Weight (kg)	Dimensions H x W x D (mm)	EAL diameter (mm)	Flue socket diameter (mm)	Energy efficiency
I3N 14	IMPRESSION 3G 59.44.14	side opening	3.3-8.6	83/83/-	12	139	1110x669x455	125	150-200	A*
I3N 16	IMPRESSION 3G 59.44.16	side opening	3.3-8.6	83/83/-	12	139	1110x669x455	125	150-200	A*
I3Z 14	IMPRESSION 3G 70.50.14	side opening	4.3-11.3	82/85/-	12	178	1170x779x505	125	150-200	A*
I3Z 16	IMPRESSION 3G 70.50.16	side opening	4.3-11.3	82/85/-	12	178	1170x779x505	125	150-200	A*
I3X 14	IMPRESSION 3G 80.54.14	side opening	5.2-13.5	81/84/-	12	211	1230x879x530	150	180-200	A*
I3X 16	IMPRESSION 3G 80.54.16	side opening	5.2-13.5	81/84/-	12	211	1230x879x530	150	180-200	A*
I3LJ 14	IMPRESSION 3G L 83.51.14	lifting door	4.9-12.7	77/81/86	12	278	1352x1140x598	150	180 / 200	A
I3LJ 16	IMPRESSION 3G L 83.51.16	lifting door	4.9-12.7	77/81/86	12	278	1352x1140x598	150	180 / 200	A
I3LK 14	IMPRESSION 3G L 97.51.14	lifting door	5.6-14.6	80/83/88	12	324	1352x1279x661	150	180 / 200	A
I3LK 16	IMPRESSION 3G L 97.51.16	lifting door	5.6-14.6	80/83/88	12	324	1352x1279x661	150	180 / 200	A
IL3LG 14	IMPRESSION L 3G L 63.51.38.14	lifting door	5.5-14.3	77/81/90	12	252	1352x862x610	150	180 / 200	A
IL3LG 16	IMPRESSION L 3G L 63.51.38.16	lifting door	5.5-14.3	77/81/90	12	252	1352x862x610	150	180 / 200	A
IR3LG 14	IMPRESSION R 3G L 63.51.38.14	lifting door	5.5-14.3	77/81/90	12	252	1352x862x610	150	180 / 200	A
IR3LG 16	IMPRESSION R 3G L 63.51.38.16	lifting door	5.5-14.3	77/81/90	12	252	1352x862x610	150	180 / 200	A
IL3LH 14	IMPRESSION L 3G L 75.51.41.14	lifting door	6.1-15.9	84/83/87	12	303	1352x981x636	150	180 / 200	A*
IL3LH 16	IMPRESSION L 3G L 75.51.41.16	lifting door	6.1-15.9	84/83/87	12	303	1352x981x636	150	180 / 200	A*
IR3LH 14	IMPRESSION R 3G L 75.51.41.14	lifting door	6.1-15.9	84/83/87	12	303	1352x981x636	150	180 / 200	A*
IR3LH 16	IMPRESSION R 3G L 75.51.41.16	lifting door	6.1-15.9	84/83/87	12	303	1352x981x636	150	180 / 200	A*
IC3LH 24	IMPRESSION C 3G L 74.51.37.24	lifting door	5.7-14.8	76/80/87	12	246	1355x875x581	150	180 / 200	A
IC3LH 26	IMPRESSION C 3G L 74.51.37.26	lifting door	5.7-14.8	76/80/87	12	246	1355x875x581	150	180 / 200	A
IU3LG 24 K1	IMPRESSION U 3G L 55.51.55.24 K1	lifting door	5.8-15.1	78/81/85	12	308	1356x775x927	150	180 / 200	A
IU3LG 26 K1	IMPRESSION U 3G L 55.51.55.26 K1	lifting door	5.8-15.1	78/81/85	12	308	1356x775x927	150	180 / 200	A

* without accumulation / with Mammoth accumulation / with AMS draught system

TECHNICAL PARAMETERS FOR FIREPLACE INSERTS **DYNAMIC 2G**

Order code	Model	Specifications	Regulated output (kW)	Regulated hot-water output (kW)	Efficiency (%)	Chimney draft (Pa)	Weight (kg)	Dimensions H x W x D (mm)	EAI diameter (mm)	Flue socket diameter(mm)	Energy efficiency
D2L 01N	DYNAMIC 2G 44.55.01N	side opening	3.5-9.1		85	12	134	1065 x 500 x 482	150	180/200	A*
D2M 01N	DYNAMIC 2G 66.50.01N	side opening	3.9-10.1		85	12	183	1015 x 720 x 485	150	180/200	A*
D2M 13N	DYNAMIC 2G 66.50.13N	side opening	2.4-6.2		85	12	159	1091 x 720 x 400	150	200	A*
DB2M 01N	DYNAMIC B2G 66.50.01N	side opening	3.9-10.1		85	12	188	1015 x 720 x 549	150	180/200	A*
DB2M 13N	DYNAMIC B2G 66.50.13N	side opening	2.4-6.2		85	12	175	1091 x 720 x 464	150	200	A*
DW2M 01	DYNAMIC W 2G 66.50.01	side opening	5.9-15.2	4.1-10.7	89	12	292	1279 x 824 x 494	150	180	A*
DW2M 01P	DYNAMIC W 2G 66.50.01P	side opening	5.8-15.1	4.3-11.3	88	12	300	1279 x 840 x 519	150	180	A*
DWB2M 01	DYNAMIC WB 2G 66.50.01	side opening	5.9-15.3	3.8-9.9	87	12	291	1279 x 833 x 538	150	180	A*
DWB2M 01P	DYNAMIC WB 2G 66.50.01P	side opening	6.0-15.6	4.1-10.5	86	12	300	1279 x 848 x 538	150	180	A*

TECHNICAL PARAMETERS FOR FIREPLACE INSERTS **DYNAMIC PLUS 3G**

Order code	Model	Specifications	Regulated output (kW)	Efficiency (%) *	Chimney draft (Pa)	Weight (kg)	Dimensions H x W x D (mm)	EAI diameter (mm)	Flue socket diameter(mm)	Energy efficiency
D3F 01	DYNAMIC 3G 38.50.01	side opening	5.1-13.1	-/87/91	12	174	957x606x576	150	180 / 200	A*
D3G 01	DYNAMIC 3G 44.55.01	side opening	5.8-15.1	-/89/93	12	193	1005x664x576	150	180 / 200	A*
D3H 01	DYNAMIC 3G 66.44.01	side opening	6.2-16.0	-/89/92	12	226	895x884x570	150	180 / 200	A*
DB3F 01	DYNAMIC B 3G 38.50.01	side opening	5.0-13.0	-/85/88	12	171	957x606x577	150	180 / 200	A*
DB3H 01	DYNAMIC B 3G 66.44.01	side opening	5.5-14.2	-/84/89	12	219	895x884x577	150	180 / 200	A*
DT3G 01	DYNAMIC T 3G 44.55.01	side opening	5.5-14.2	-/84/94	12	195	1005x664x577	150	180 / 200	A*
DT3H 01	DYNAMIC T 3G 66.44.01	side opening	7.3-19.0	-/81/89	12	221	895x884x577	150	180 / 200	A*
DL3SG 21	DYNAMIC L 3G S 55.44.42.21	side opening	5.0-13.0	-/83/91	12	183	894x698x605	150	180 / 200	A*
DR3SG 21	DYNAMIC R 3G S 55.44.42.21	side opening	5.0-13.0	-/83/91	12	183	894x698x605	150	180 / 200	A*
DL3SH 21	DYNAMIC L 3G S 72.44.42.21	side opening	6.8-17.8	-/82/90	12	223	894x868x605	150	180 / 200	A*
DR3SH 21	DYNAMIC R 3G S 72.44.42.21	side opening	6.8-17.8	-/82/90	12	223	894x868x605	150	180 / 200	A*
DU3SH 21 K1	DYNAMIC U 3G S 56.44.57.21 K1	side opening	5.5-14.3	-/81/84	12	234	805x578x785	150	180 / 200	A*

* without accumulation / with Mammoth accumulation / with AMS draught system

TECHNICAL PARAMETERS FOR FIREPLACE INSERTS **HEAT 3G**

Order code	Model	Specifications	Regulated output (kW)	Efficiency (%)	Chimney draft (Pa)	Weight (kg)	Dimensions H x W x D (mm)	EAI diameter (mm)	Flue socket diameter(mm)	Energy efficiency
H3LE 04	HEAT 3G L 66.50.04	lifting door	3.9-10.1	85	12	233	1335×964×557	150	200	A*
H3LE 06	HEAT 3G L 66.50.06	lifting door	3.9-10.1	85	12	233	1335×964×557	150	200	A*
H3LJ 04	HEAT 3G L 88.66.04	lifting door	5.5-14.2	81	12	334	1652×1184×566	150	200	A*
H3LJ 06	HEAT 3G L 88.66.06	lifting door	5.5-14.2	81	12	334	1652×1184×566	150	200	A*
H3LF 04	HEAT 3G L 88.50.04	lifting door	4.5-11.7	81	12	272	1335×1184×557	150	200	A*
H3LF 06	HEAT 3G L 88.50.06	lifting door	4.5-11.7	81	12	272	1335×1184×557	150	200	A*
H3LG 04	HEAT 3G L 110.50.04	lifting door	6-15.6	83	12	327	1335×1404×557	150	200	A*
H3LG 06	HEAT 3G L 110.50.06	lifting door	6-15.6	83	12	327	1335×1404×557	150	200	A*
HL3LG 24	HEAT L 3G L 65.51.40.24	lifting door	3.5-9	85	12	247	1357×876×626	150	200	A*
HL3LG 26	HEAT L 3G L 65.51.40.26	lifting door	3.5-9	85	12	247	1357×876×626	150	200	A*
HR3LG 24	HEAT R 3G L 65.51.40.24	lifting door	3.5-9	85	12	247	1357×876×626	150	200	A*
HR3LG 26	HEAT R 3G L 65.51.40.26	lifting door	3.5-9	85	12	247	1357×876×626	150	200	A*
HL3LF 24	HEAT L 3G L 81.51.40.24	lifting door	6-15.6	83	12	271	1357×1036×626	150	200	A*
HL3LF 26	HEAT L 3G L 81.51.40.26	lifting door	6-15.6	83	12	271	1357×1036×626	150	200	A*
HR3LF 24	HEAT R 3G L 81.51.40.24	lifting door	6-15.6	83	12	271	1357×1036×626	150	200	A*
HR3LF 26	HEAT R 3G L 81.51.40.26	lifting door	6-15.6	83	12	271	1357×1036×626	150	200	A*
HC3LE 24	HEAT C 3G L 50.52.31.24	lifting door	2.9-7.4	82	12	186	1342×657×560	125	150	A*
HC3LE 26	HEAT C 3G L 50.52.31.26	lifting door	2.9-7.4	82	12	186	1342×657×560	125	150	A*
HC3LH 24	HEAT C 3G L 65.52.31.24	lifting door	3.9-10.1	83	12	216	1342×807×560	150	200	A*
HC3LH 26	HEAT C 3G L 65.52.31.26	lifting door	3.9-10.1	83	12	216	1342×807×560	150	200	A*
HC3LJ 24	HEAT C 3G L 80.52.31.24	lifting door	5-12.9	80	12	244	1342×957×560	150	200	A
HC3LJ 26	HEAT C 3G L 80.52.31.26	lifting door	5-12.9	80	12	244	1342×957×560	150	200	A
HU3LG 24	HEAT U 3G L 50.52.50.24	lifting door	4-10.4	83	12	234	1382×582×749	150	200	A*
HU3LG 26	HEAT U 3G L 50.52.50.26	lifting door	4-10.4	83	12	234	1382×582×749	150	200	A*
HU3LF 24	HEAT U 3G L 50.52.70.24	lifting door	5-13	83	12	284	1382×582×950	150	200	A*
HU3LF 26	HEAT U 3G L 50.52.70.26	lifting door	5-13	83	12	284	1382×582×950	150	200	A*



Order code	Model	Specifications	Regulated output (kW)	Efficiency (%)	Chimney draft (Pa)	Weight (kg)	Dimensions H x W x D (mm)	EAI diameter (mm)	Flue socket diameter(mm)	Energy efficiency
HT3Z 04	HEAT T 3G 70.50.04	side opening	4-10.3	82	12	190	1192×808×570	150	180	A*
HT3Z 06	HEAT T 3G 70.50.06	side opening	4-10.3	82	12	190	1192×808×570	150	180	A*
HT3LF 04	HEAT T 3G L 88.50.04	lifting door	5.8-15.1	81	12	347	1426×1186×585	150	200	A
HT3LF 06	HEAT T 3G L 88.50.06	lifting door	5.8-15.1	81	12	347	1426×1186×585	150	200	A

TECHNICAL PARAMETERS FOR FIREPLACE INSERTS **HEAT 4G**

Order code	Model	Specifications	Regulated output (kW)	Regulated output of water exchanger (kW)	Efficiency (%)	Chimney draft (Pa)	Weight (kg)	Dimensions H x W x D (mm)	EAI diameter (mm)	Flue socket diameter(mm)	Energy efficiency
H4N 04	HEAT 4G 59.50.04	side opening	4.2-10.8		82	12	148	1024×669×533	150	150	A*
H4N 06	HEAT 4G 59.50.06	side opening	4.2-10.8		82	12	148	1024×669×533	150	150	A*
H4Z 04	HEAT 4G 70.50.04	side opening	5.5-14.3		80	12	167	1024×779×533	150	150	A
H4Z 06	HEAT 4G 70.50.06	side opening	5.5-14.3		80	12	167	1024×779×533	150	150	A
H4X 04	HEAT 4G 80.50.04	side opening	5.6-14.4		81	12	184	1045×879×533	150	200	A*
H4X 06	HEAT 4G 80.50.06	side opening	5.6-14.4		81	12	184	1045×879×533	150	200	A*
H4T 14	HEAT 4G 59.44.14	side opening	2.4-6.2		84	12	117	944×669×404	125	150	A*
H4T 16	HEAT 4G 59.44.16	side opening	2.4-6.2		84	12	117	944×669×404	125	150	A*
H4P 14	HEAT 4G 70.44.14	side opening	2.8-7.3		85	12	133	1042×779×404	125	150	A*
H4P 16	HEAT 4G 70.44.16	side opening	2.8-7.3		85	12	133	1042×779×404	125	150	A*
HL4SY 24	HEAT L 4G S 60.44.33.24	side opening	3.4-8.8		81	12	107	1086×644×419	150	150	A*
HL4SY 26	HEAT L 4G S 60.44.33.26	side opening	3.4-8.8		81	12	107	1086×644×419	150	150	A*
HR4SY 24	HEAT R 4G S 60.44.33.24	side opening	3.4-8.8		81	12	107	1086×644×419	150	150	A*



Order code	Model	Specifications	Regulated output (kW)	Regulated output of water exchanger (kW)	Efficiency (%)	Chimney draft (Pa)	Weight (kg)	Dimensions H x W x D (mm)	EAI diameter (mm)	Flue socket diameter(mm)	Energy efficiency
HR4SY 26	HEAT R 4G S 60.44.3326	side opening	3,4-8,8		81	12	107	1086×644×419	150	150	A ⁺
HL4SX 24	HEAT L 4G S 70.44.3324	side opening	4,5-11,7		80	12	128	1086×744×419	150	150	A
HL4SX 26	HEAT L 4G S 70.44.3326	side opening	4,5-11,7		80	12	128	1086×744×419	150	150	A
HR4SX 24	HEAT R 4G S 70.44.3324	side opening	4,5-11,7		80	12	128	1086×744×419	150	150	A
HR4SX 26	HEAT R 4G S 70.44.3326	side opening	4,5-11,7		80	12	128	1086×744×419	150	150	A
HL4SG 24	HEAT L 4G S 65.51.4024	side opening	5,2-13,5		80	12	162	1206×758×504	150	200	A
HL4SG 26	HEAT L 4G S 65.51.4026	side opening	5,2-13,5		80	12	162	1206×758×504	150	200	A
HR4SG 24	HEAT R 4G S 65.51.4024	side opening	5,2-13,5		80	12	162	1206×758×504	150	200	A
HR4SG 26	HEAT R 4G S 65.51.4026	side opening	5,2-13,5		80	12	162	1206×758×504	150	200	A
HW4N 04	HEAT W 4G 59.50.04	side opening	6,5-16,9	5,8-12,9	88	12	206	1225×690×540	150	180	A ⁺
HW4N 06	HEAT W 4G 59.50.06	side opening	6,5-16,9	5,8-12,9	88	12	206	1225×690×540	150	180	A ⁺
HW4Z 04	HEAT W 4G 70.50.04	side opening	7,8-20,3	5,7-14,8	86	12	239	1224×800×540	150	180	A ⁺
HW4Z 06	HEAT W 4G 70.50.06	side opening	7,8-20,3	5,7-14,8	86	12	239	1224×800×540	150	180	A ⁺

TECHNICAL PARAMETERS FOR HEAT CASSETTE

Order code	Model	Specifications	Puissance réglable (kW)	Efficiency (%)	Weight (kg)	Dimensions H x W x D (mm)	EAI diameter (mm)	Flue socket diameter(mm)	Energy efficiency
K1Z 01	CASSETTE 1G 80.52.01	Ouverture latérale	3,3-8,4	81	101	566×848×492	75	150	A ⁺
K1X 01	CASSETTE 1G 90.48.01	Ouverture latérale	3,3-8,4	80	101	530×948×492	75	150	A ⁺



ROMOTOP spol. s r. o.
Komenského 325
742 01 Suchdol nad Odrou
Czech Republic

www.romotop.com

KV2026.04.ENG
Technical changes and misprints are subject
to change.